

BTO BREEDING BIRD SURVEY

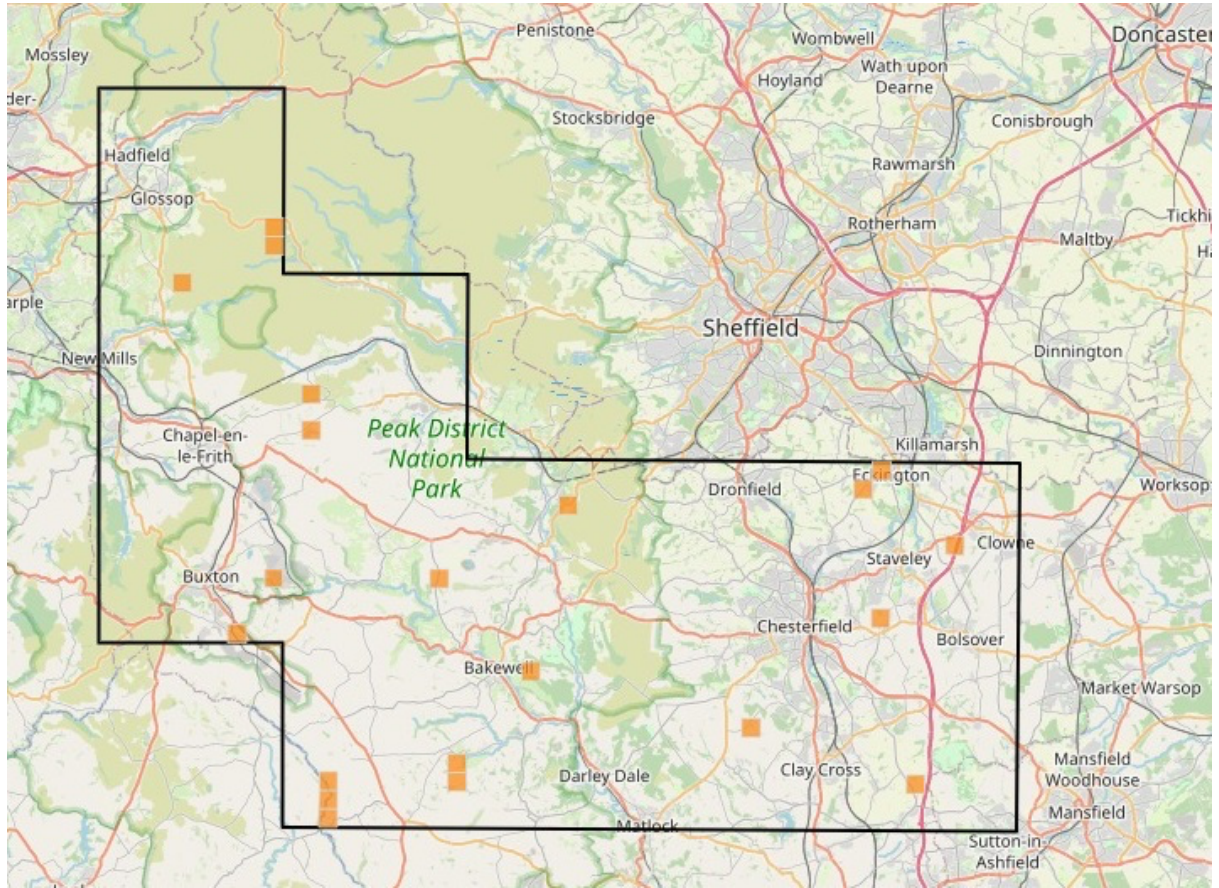
The BTO's Breeding Bird Survey (BBS) monitors the population changes of over 100 species across the UK through the efforts of volunteers who survey their randomly selected 1km square each spring. It is a great way to make your birdwatching count. The only requirement is that you are able to confidently identify the species you are *likely* to encounter in a given square by sight and sound.

The survey involves a recce visit to assess the habitat, and two early-morning spring visits to count all the birds that you see or hear while walking two 1km lines (transects) across the square, plus nest counts for any colonial species. Each visit will take about 2 hours, covering around 3 kms/2 miles, noting on a paper form every bird that you come across by sight or sound. Where possible the route will follow public rights of way, but this isn't always possible. The nature of the terrain, and hence the effort required to cover it, will vary depending on the habitats and access within a square. You can optionally record any mammals that you come across, and visit the square later in the season to look for butterflies. Data can be entered to BBS-Online or paper copies can be returned for input by the BTO.

For BBS purposes, Derbyshire is divided into two regions, North and South. There are currently between 20 and 25 squares available in each region, covering a wide range of habitats. (Note that the squares are already defined – it is not a question of individuals simply covering their favourite site or one close to where they live.) There is also one Waterways BBS stretch available, on the Barlow Brook south of Dronfield. You can find much more information online at <https://www.bto.org/our-science/projects/breeding-bird-survey>. To see what squares are available in your area, click on 'Taking part', look for either Derbyshire (North) or Derbyshire (South) and you will see in which 10km squares there are squares available. You can register your interest online or contact me at simonroddis@yahoo.co.uk, and we'll try to identify a square which will work for you.

The maps below show the available squares in each part of the county as at 16 December 2022.

Derbyshire North



Derbyshire South

